

Engraving



Engraving Kit

for Futura and Futura Pro

Kit Engraving

Make your business incisive with the exclusive Engraving Kit and boost the potential of your Futura/Futura Pro

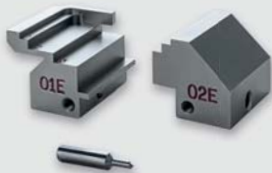
The Engraving Kit is a set of accessories dedicated to engraving, compatible with all the Futura and Futura Pro key cutting machines. The special, three-stepped jaws make it easy to install a wide variety of metal keys, small medals and plates, whilst the free software has been developed to guide you step-by-step through the creation and management of customised engraving models, designed for a vast range of references both from Silca and others.



Kit components

The **Engraving Kit (D749614ZB)** is compatible with all the Futura and Futura Pro* models and includes:

- the **01E jaw** (D748737ZB);
- the **02E jaw** (D748739ZB);
- the **18DW cutter** (D748741ZB).



The **software is free and already installed** in the Futura/Futura Pro app. You can access it via the specific icon from the homepage of the app (version 2.1).

It is available starting from:

- the 3.3.0 software version for the Futura key cutting machines
- the 3.5.0 software version for the Futura Pro key cutting machines.



* The Engraving Kit is compatible with: Futura, Futura Japan, Futura One, Futura China, Futura Automotive, Futura Automotive Token, Futura Pro, Futura Pro Japan, Futura Pro Automotive, Futura Pro Automotive Token, Futura Pro One.

Optimised engraving for a wide range of keys, small medals and plates

The special jaws, compatible with the 01R clamp, are designed to facilitate the installation of a vast array of metal and aluminium Ultralite keys, small medals and plates. The jaws feature **3 areas** (or steps) for engraving items of different dimensions:

- Engraving area 1: 26-32 mm x 40mm;
- Engraving area 2: 20-26 mm x 40 mm;
- Engraving area 3: 8-14 mm x 40 mm.

Pre-set user models and guided procedures

The software includes **over 220 default user models**



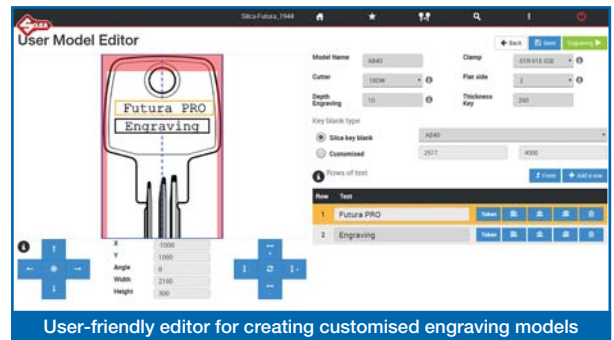
Engraving area 1



Engraving area 2



Engraving area 3



User-friendly editor for creating customised engraving models

for just as many **Silca references** (keys, medals and plates), which identify the areas for inserting the text you want to engrave. For each reference, you can select the depth of the incision, whilst the software indicates the jaw step you should use.

Management of user models

The software allows you to **create customised engraving models through a user-friendly editor** that enables you to add text areas, both on the front and rear of the key or medal, and to adjust their size and position within pre-set parameters.

Engraving other references

With the command 'Customised' you can **create new engraving models, not yet present in the database, by defining the available area**. You can create a rectangle (typically used for engraving the blade) and a circle (typically used for the key head).

Practical use of the engraving feature

All the user models can be accessed both **from the 'Engraving' main menu** of the software and **from the 'Cut' menu** to engrave a compatible reference.

Optimised procedures with the job queues

The software also manages job queues, with which you will be able to **set the cutting/engraving parameters of a series of keys and, afterwards, process them**. Depending on your needs, you can engrave all the keys first and then cut them, or vice versa. This will result in an optimised duplication with a significant reduction of time spent installing accessories.

Quality performance

The machine performance, in terms of engraving quality, varies according to the speed of the cutting tool:

- **7100 rpm for the Futura key cutting machines;**
- **12100 rpm for the Futura Pro key cutting machines.**



In compliance with current regulations relating to industrial property, we hereby state that the trade-marks or trade names mentioned in this document are the exclusive property of authorized manufacturers of locks and users. Said trade-marks or trade names are nominated only for the purposes of information so that any lock for which our keys are made can be rapidly identified. This document is reserved exclusively for professional key cutters who use Silca products. / All information and illustrations in this document are for guidance only. Silca reserves the right to alter products designs, dimensions or into to improve the products quality. The contents of this document are fully protected by copyright and may not be copied or reproduced in any form, without written permission from Silca S.p.A. Any controversy shall be settled by the Courts of Justice where the company has its headquarters, with express exclusion of any other court.

SILCA S.p.A. Via Podgora, 20 (Z.I.) - 31029 Vittorio Veneto (TV) - Italy
Telephone +39 0438 9136 Fax +39 0438 913800

www.silca.biz



dormakaba Group